

2019年01月03日印刷

特别提示

- 本画册为第十一次印刷，内容有更新，订货请以本册为准。
- 画册所有产品及效果图片仅供参考，产品色彩及肌理，请以实物为准。

版权归广东福美集团有限公司所有，不得翻版，违者必究。

REMARKS

- This catalogue is the 11th printing versions, some contents have been updated, we use this catalogue as standard when placing an orders.
- All products and the artworks from the catalogue just for reference, the colors and the patterns, should base on actual products.

All rights reserved. No part of this publication may be reproduced, distributed, or transmitted in any form or by any means without prior written permission.

PHOMI
福美控股

www.phomi.com

广东福美集团有限公司
PHOMI GROUP

总部：广东省广州市番禺区石壁钟盛路112号 P.C: 511495

HQ: 112 Shibi Zhongsheng Road, Panyu district,
Guangzhou China

Service Hot Line : +86 4008-0303-08

Tel : +86 20-84515088

Fax : +86 20-34632196

E-mail : market@phomi.com



PHOMI®

福美建築時裝

Unfired Flexi Clay CLADDING & FLOORING

MCM 生态墙材&地板



Changing Our City

MCM is committed to the construction of low carbon city

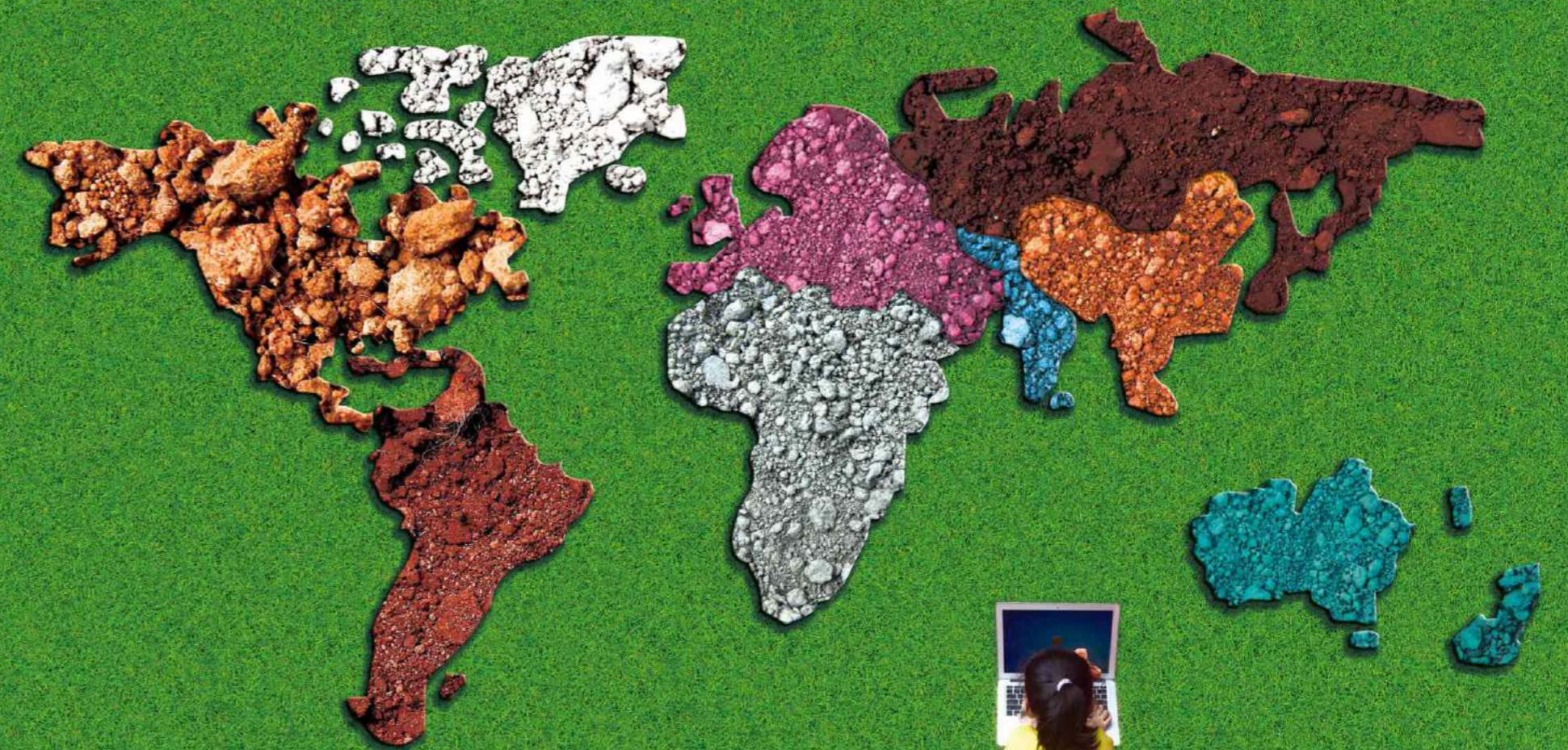
MCM在优化城市生态



传统工业城市
Traditional Industrial City



MCM绿色低碳城市
MCM Green City



Care for The Earth
关心地球环境

Living in Harmony With Nature
与自然和谐共处

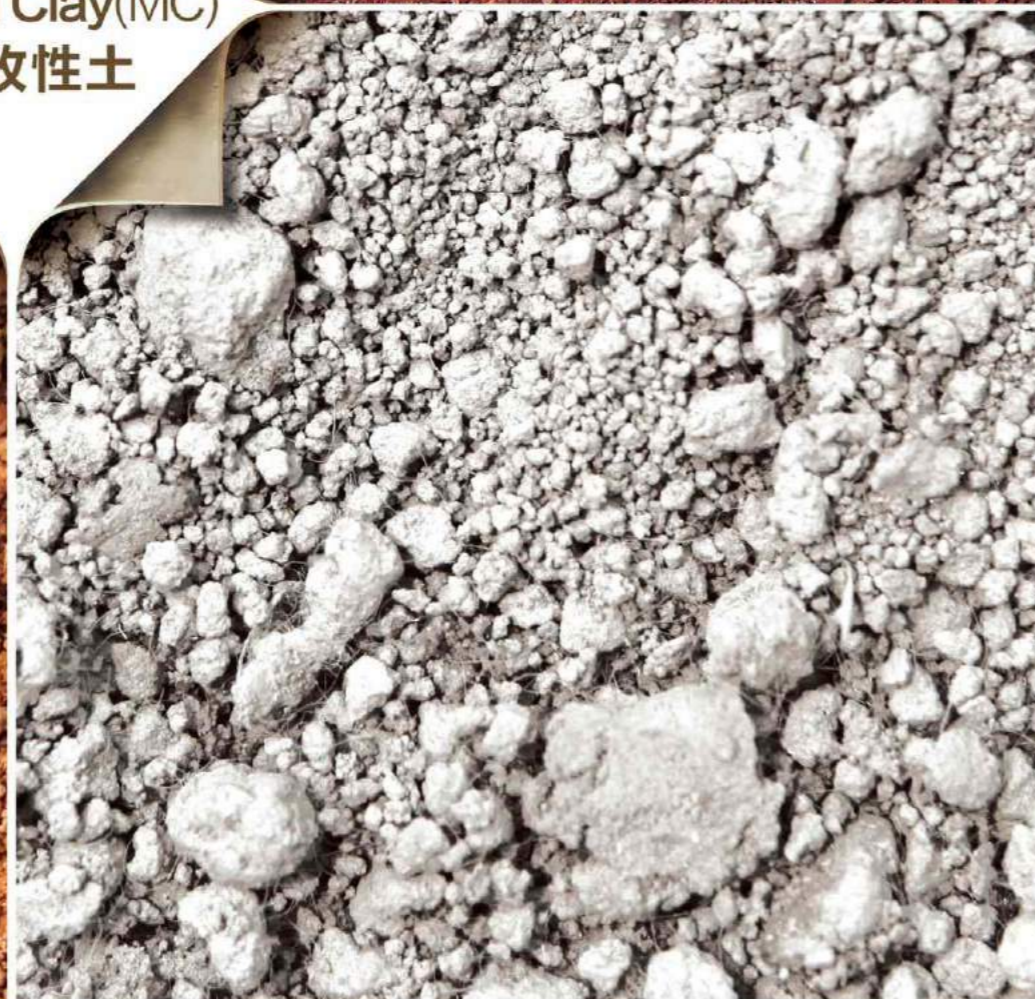
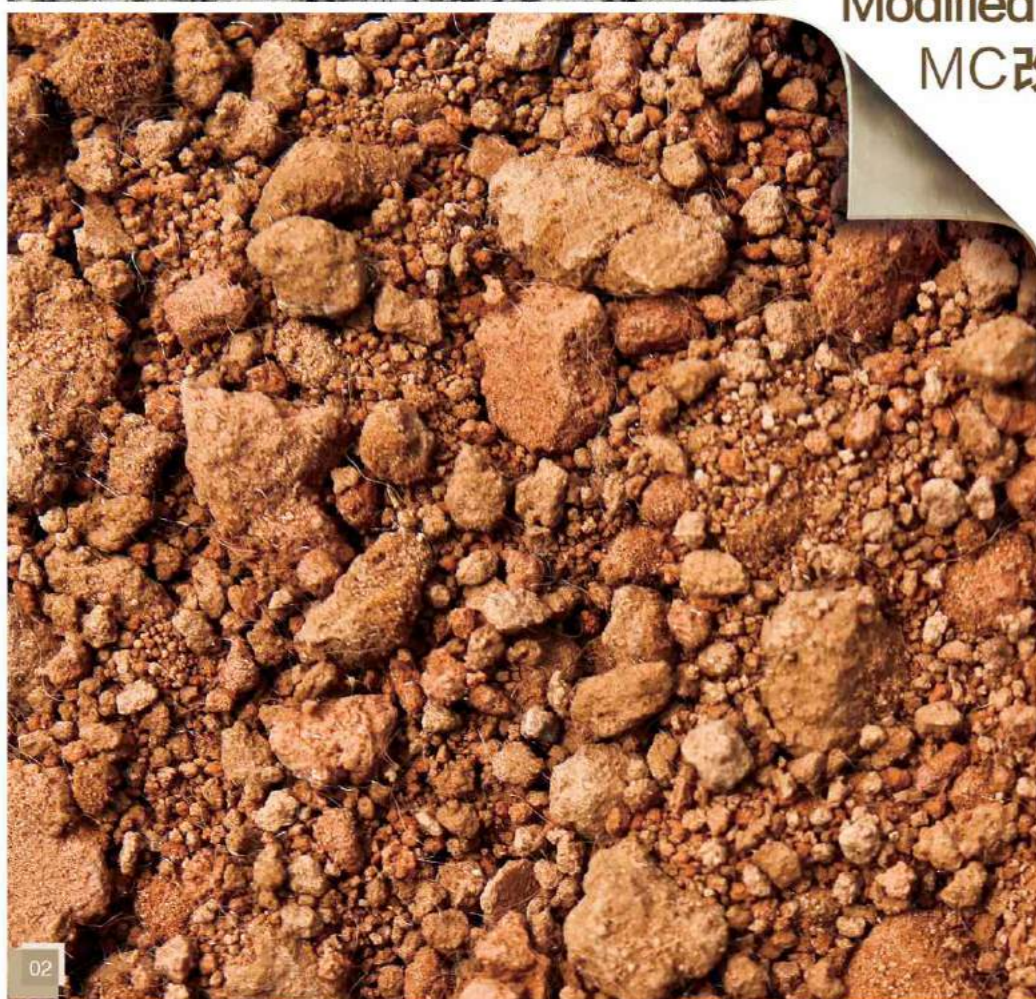
A classic Timeless Material
经典的生态材料

Your Well Being is Our Concern
呵护您和家人的健康





Modified Clay(MC)
MC改性土



Modified Clay (MC)

New industrial raw material

The birth of MC new industrial raw material means inorganic clay can be modeled go-as-you please, just like plastic.

Phomi currently has various range of MC products for interior and exterior use which also include both flooring and cladding applications as well as furniture laminates which are recyclable and can save 80% energy compare to traditional building material.

Phomi' s products are versatile and can be made and applied to other applications including used as a substitute against traditional method of road making using stone aggregates and asphalt or concrete. It can also be used for track and field as well as flooring for gyms. Hence, the products are very design friendly, can come in board form, shape form and engraving form, leather print form making it usable for home use, construction and automobile. The market opportunities within these broad market segments are immense and rewarding.

Phomi' s success in the market place would however, requires all the efforts and co-operation and market feedback of its business partners in various industries to further promote Phomi' s brand visibility which would then see wider use of such green materials benefitting our beloved ear

MC改性土

新型生态工业原料

MC新型生态工业原料的诞生，意味着无机土不用烧结，如同有机塑料可任意造型。

福美企业采用MC生态原料已成功推出MCM饰面片材系列产品。从生产到应用，相对于传统装饰材料，节能降耗达80%；永远可循环再生。

MC生态原料的可能性不限于此，它可替代水泥、沥青用于铺装道路；可替代塑胶，制成板材、型材、日用品或艺术品等，在各行各业都具有无限前景。

福美是世界MCM装饰材料行业的领导者。我们希望联合更多智者，在MC技术基础上持续创新，造福人类，分享利益。

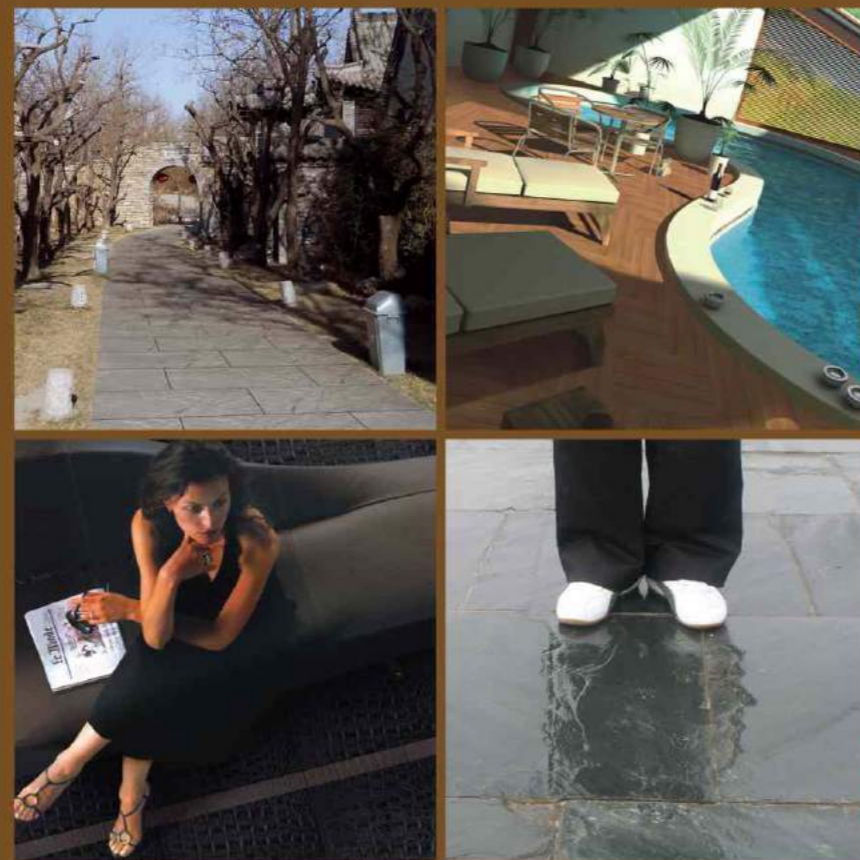


MCM Unfired Flexi Clay Cladding

MCM生态墙材

可呼吸、超耐久、超耐撞。很适合高空/异形建筑、空间翻新。

Breathability, durability, Safety—suitable for high-rise, irregular space and building refurbishment.



MCM Unfired Flexi Clay Flooring

MCM生态地板

超防滑、脚感特别舒适。

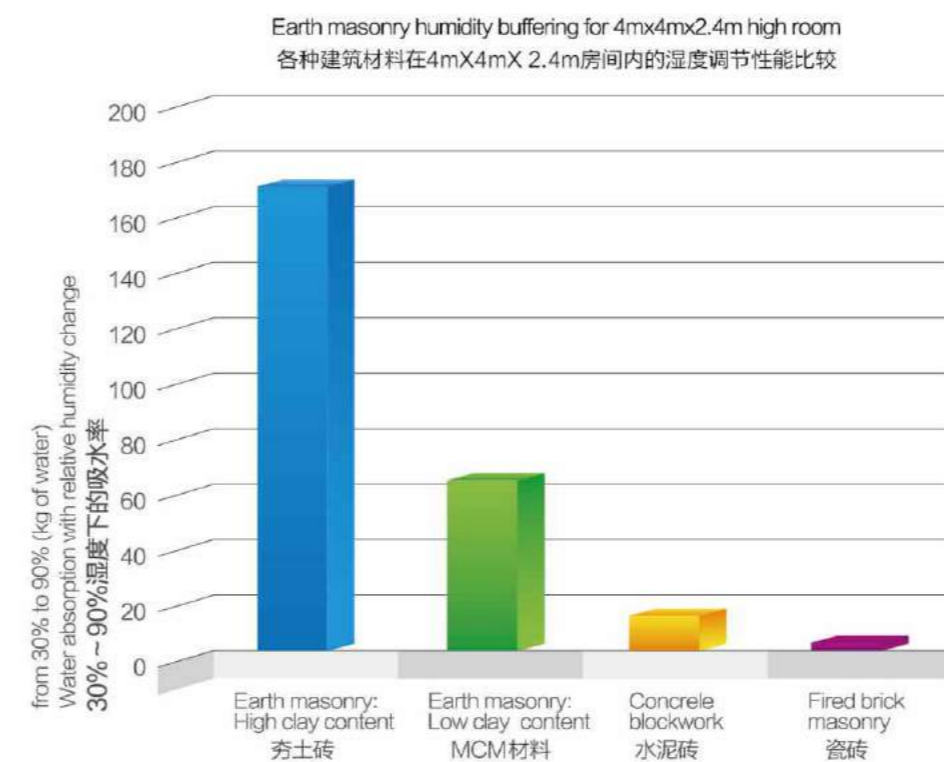
Anti-slip, comfortable.

Breathable Moisture Regulating Building Material

Unfired Flexi Clay Cladding&Flooring is made from MCM modified clay materials. The most attractive are their functional properties, principally, that of breathability and known abilities to regulate relative humidity (RH). Next to air tightness and embodied energy, breathability is possibly the most critical consideration in building design.

Unfired Clay can absorb and desorbs indoor humidity faster than any other building material.

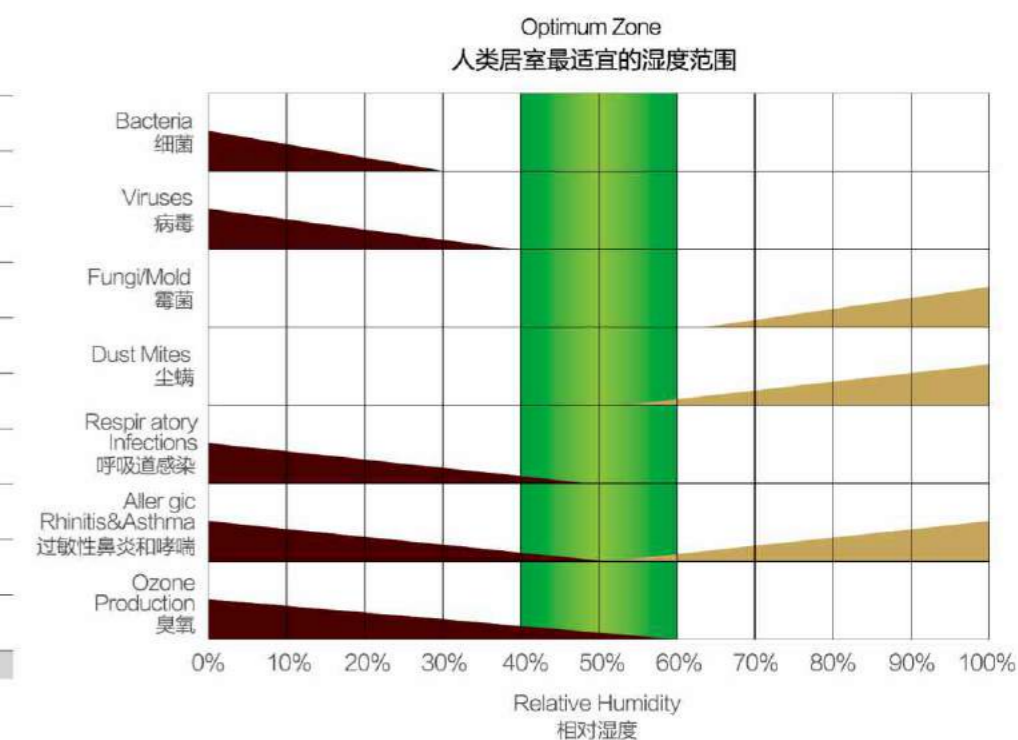
General Speaking, Clay can regulate relative interior humidity between 40% and 70%. (Arundel, A. V. 1986) By keeping RH between 40% and 70% research has shown that the likelihood for airborne infectious bacteria and virus to survive is the lowest.



MCM生态材料,可呼吸 可调节室内温度和湿度

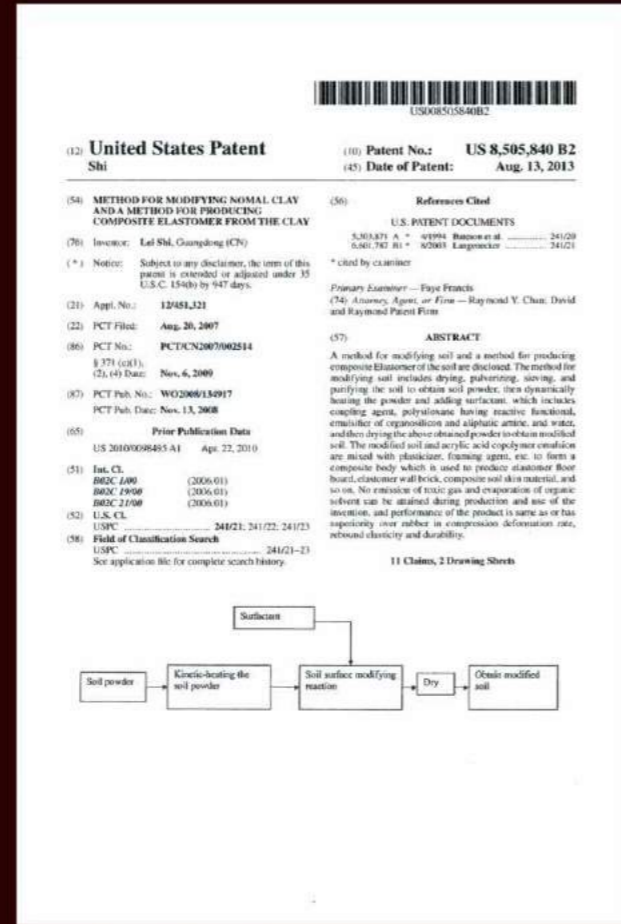
MCM生态材料最吸引人之处是透气性,可有限调节生活环境相对湿度。相对于不透气、高耗能的其它建筑装饰材料,透气性可能是建筑设计中最主要的考虑因素。

MCM生态材料相比任何其他建筑装饰材料,能更快地吸收及释放室内湿度,不反潮,使空间湿度保持在40%-70%之间。经科学研究表明:室内湿度维持在40%-70%之间,空气传染细菌和病毒生存的可能性是最低的。

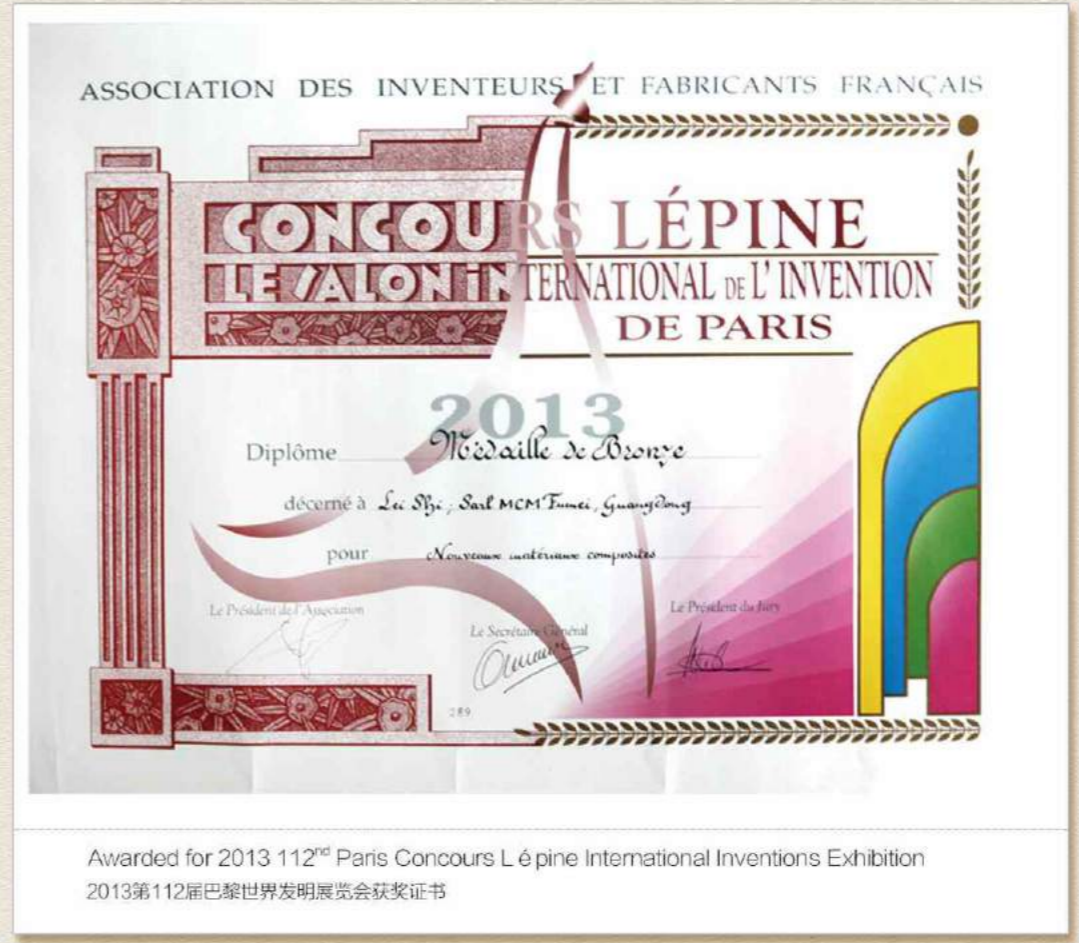




European Patent
 欧盟发明专利证书



United States Patent
 美国发明专利证书



Awarded for 2013 112nd Paris Concours Lépine International Inventions Exhibition
 2013第112届巴黎世界发明展览会获奖证书



Awarded for 2012 China 7th International Exhibition of Inventions
 2012第7届中国国际发明博览会获奖证书



Hi-tech enterprise authenticated certificate
 高新技术企业证书



China Torch Program
 国家火炬计划项目证书



MSDS Report
 物品安全技术说明书



Reaction to fire class:A2
 欧盟A2防火认证



CE Certificate of TZU
 欧盟CE认证



Unfired Flexi Clay MCM STONE MCM生态石材

MCM Stone presents the original surface of natural environment, without destroying natural environment mine.

拥有与天然石材一样的生态质感和纹理, 却不开山劈岭。





052



052053



031YZD

Packing Information 包装信息

Product Size 常备规格 (mm)	Box Size 外包装规格 (mm)	pc/box 片/件	Kg / box 件	m ² / box 件	box/pallet 件/托	m ² / pallet 托	MOQ 最少起订量 (m ²)
1200x600	1230x620x65	16	50-55	11.52	10	115.2	230.4
600x300	620x320x90	26	21-23	4.68	40	187.2	187.2

Product Description 产品说明

Travertine is rare and expensive, MCM travertine almost duplicate full nature travertine. MCM travertine applies to exterior wall, all kinds of commercial space, public, office, entertainment space, family background wall, and bathroom etc.

洞石珍稀昂贵,是石材之尊, MCM洞石几乎100%克隆了洞石的元素。为克服洞眼可能藏污, MCM洞石采用纳米技术进行了处理, 兼具有抗污自洁功能, 适用于外墙及各种商业空间、公共及办公空间、休闲娱乐空间、家庭背景墙、卫浴空间的铺装。

Application Tips 应用提示

1. Paste: Just similar to the natural stone, there are some holes through it, must use the same color adhesive to paste it to match the MCM Travertine color.
2. Grout: Suggest to do grouting. Do it by using same color grout, stainless steel strip or silicone glue gun.
3. Clean Protection: when using on the flooring, need to brush 3-4 times of stone sealer after pasting products. If paste in the indoor, for brightening purpose, just need to 2-3 times of stone sealer for installation.
4. The base should be smooth. Need to use V-tooth trowel to paste adhesive on the back of product to create V pattern. Do not paste the adhesive with flat pattern on the back of the product.

- 1、粘贴: 与天然洞石一样, 有些孔洞透底, 须采用配套的同色粘合剂粘贴。
- 2、填缝: 建议留缝铺贴, 填同色缝, 也可填不锈钢片或硅酮胶, 勾凹缝。也可留1-2mm缝工字铺贴, 但铺贴前须把缝位刷黑。
- 3、防污: 如用于地板, 铺贴完之后, 须均匀涂刷3-4遍配套的石材抗污剂。用于室内墙面, 如需增亮效果, 涂刷2-3遍配套的石材抗污剂即可。
- 4、粘贴基层应相对平整, 用锯齿镬刀在产品背面刮浆, 须刮出锯齿纹路, 不可平抹浆。

Nature, Unique, Classics 特点: 源于天然 无一重复 片片经典



052 工字铺贴 600x300mm 勾10mm/025缝



052KZ 3种规格组合 600x300 600x200 600x100mm 勾10mm/025缝



031YZD 井字铺贴 600x300mm 勾8mm/043缝



031Y 3种规格组合 600x300 600x200 600x100mm 勾10mm/043缝



056



052KZ



031Y



OASIS STONE FOGE 岚山石



OASIS STONE RAINE 分婉石



OASIS STONE WINDE 烟山石

Packing Information 包装信息

Product Size 常备规格 (mm)	900x590	590x290
Box Size 外包装规格 (mm)	920x620x80	620x320x90
pc/box 片/件	20	24
Kg / box 件	55 - 60	17 - 21
m ² / box 件	10.62	4.1064
box/pallet 件/托	10	40
m ² / pallet 托	106.2	164.256
MOQ 最少起订量 (m ²)	212.4	164.256

Product Description 产品说明

MCM Oasis Stone has long corrugated board, natural color, and just like a landscape painting without a repeat. MCM Oasis Stone applies to pavement, exterior wall, roof, tunnel, all kinds of commercial space, public places, entertainment places and bathroom.

板面波纹绵长，颜色天然合成，无一重复，片片自成一幅山水画。适用于路面或外墙、屋顶、隧道、桥墩铺装及各种商业空间、公共场所、休闲娱乐场所、卫浴空间的铺装。

Application Tips 应用提示

1. MCM Oasis Stone product surface just like the natural stone which has rough surface, and have various thickness. Suggest to do the grouting with same color grout.
 2. After paste on the floor, should brush 3-4 times of stone sealer, to anti-foul and much easy to clean up.
- 1、该产品板面与天然壁岩一样，天然毛面，每片厚薄及其边缘厚薄有些自然落差，建议留缝铺贴，填同色缝或硅酮胶，勾凹缝。
2、用于地板，铺贴完之后，应均匀涂刷3-4遍配套的石材抗污剂，会更加防污易清洁。

Nature, Unique, Classics 特点：源于天然 无一重复 片片经典



分婉石 两种规格组合 600x300 600x150mm 勾8mm /043缝 烟山石/分婉石 900x200mm 勾8mm/043缝



分婉石/烟山石 井字组合 600x600mm 勾10mm/043缝



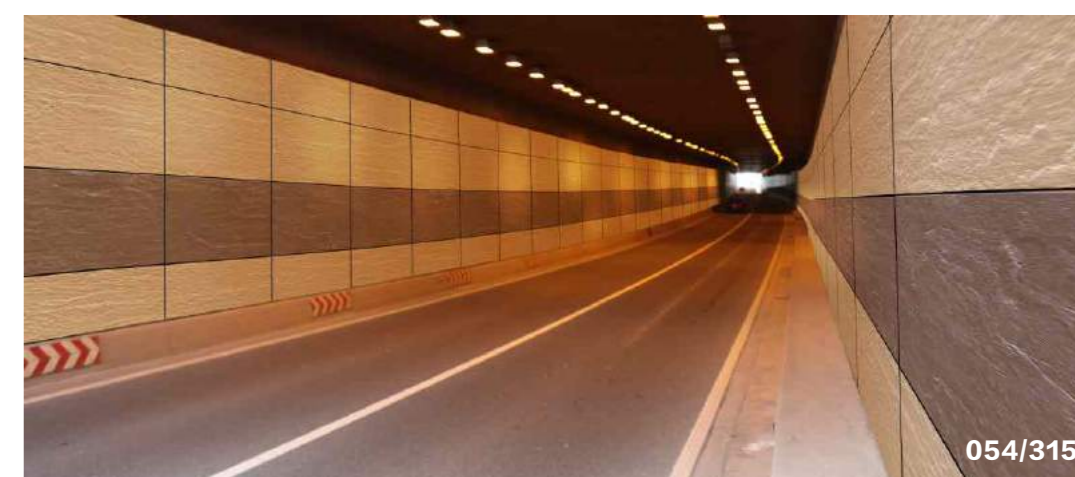
岚山石 工字组合 600x300mm 勾8mm/025缝



OASIS STONE RAINE 分婉石



OASIS STONE FOGE 岚山石



054/315



SLATE SUNNYE 晴岚石



221



SLATE PHANTOM 徽山石



SLATE ARTE 黛烟石

Packing Information 包装信息

Product Size 常备规格 (mm)	Box Size 外包装规格 (mm)	pc/box 片/件	Kg / box 件	m ² / box 件	box/pallet 件/托	m ² / pallet 托	MOQ 最少起订量 (m ²)
1150x575	1175x595x65	16	55-60	10.58	10	105.8	211.6
575x286	610x310x90	24	15-19	3.9468	40	157.872	157.872

Product Description 产品说明

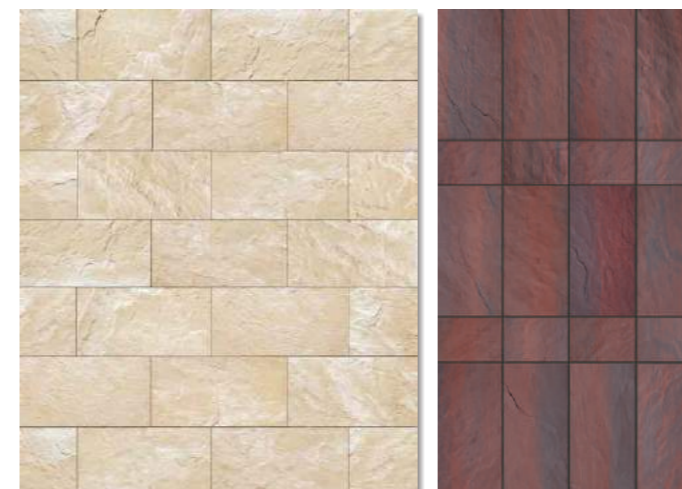
MCM Plate has long corrugated board, natural color, and just like a landscape painting without a repeat. It applies to entertainment places, commercial space, bathroom wall, floor, ceiling, exterior wall, sidewalk, and floor near the swimming pool.

板岩面，颜色天然合成，无一重复，片片自成一幅山水画。适用于休闲娱乐场所、商业空间、卫浴空间墙、地、天花的铺装。也常用于外墙、人行街道、游泳池周边的铺装。

Application Tips 应用提示

- MCM Slate product surface just like the natural stone which has rough surface, and have various thickness. Suggest to do the grouting with same color grout.
 - After paste on the floor, should brush 3-4 times of stone sealer, to anti-foul and much easy to clean up.
- 1、该产品板面与天然壁岩一样，天然毛面，每片厚薄及其边缘厚薄有些自然落差，建议留缝铺贴，填同色缝或硅酮胶，勾凹缝。
2、用于地板，铺贴完之后，应均匀涂刷3-4遍配套的石材抗污剂，会更加防污易清洁。

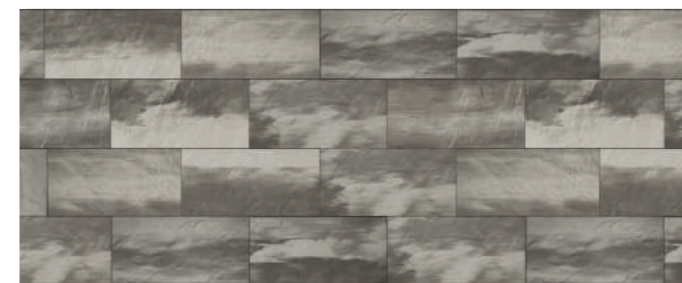
Nature, Unique, Classics 特点：源于天然 无一重复 片片经典



晴岚石 工字组合 575x286mm 留2mm自然缝 火山板岩 两种规格组合 575x286 286x190mm 勾10mm/043缝



徽山石 三种规格组合 575x286 575x190 575x90mm 勾10mm/043缝



黛烟石 组合图 575x286mm 留2mm自然缝



SLATE ARTE 黛烟石



052



SLATE PHANTOM 徽山石



SANDSTONE SUNSHINE 霞光石



SANDSTONE CLOUDE 若云石



SANDSTONE VISION 墨绕石

Packing Information 包装信息

Product Size 常规规格 (mm)	1200x590	600x290
Box Size 外包装规格 (mm)	1230x620x65	620x320x90
pc/box 片/件	20	30
Kg / box 件	60~64	18~20
m ² / box 件	14.16	5.22
box/pallet 件/托	10	40
m ² / pallet 托	141.6	208.8
MOQ 最少起订量 (m ²)	283.2	208.8

Product Description 产品说明

MCM Sandstone design based on Australian sandstone, it has natural color without repeat and its color sense is elegance. It applies to entertainment places background wall, commercial space, bathroom wall, ceiling and exterior wall.

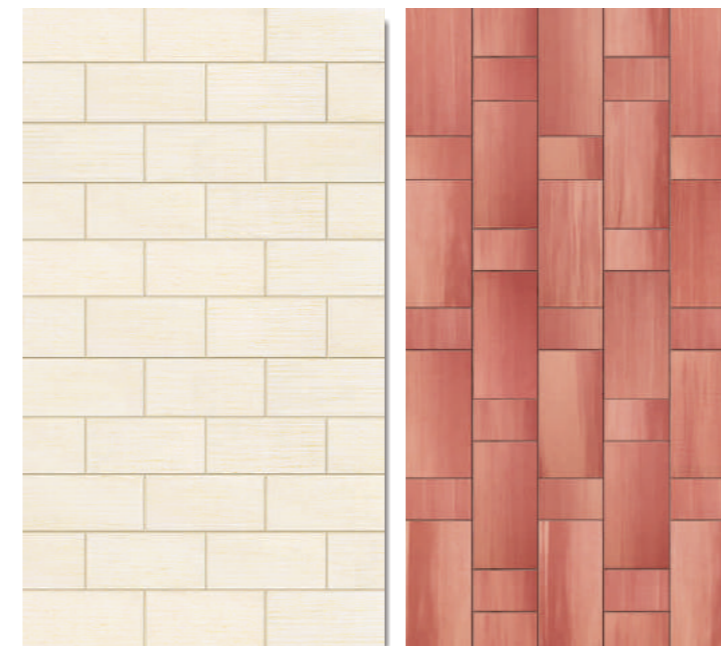
设计取材于澳洲砂岩，颜色天然合成，无一重复，色感优雅。适用于休闲娱乐场所背景墙、商业空间、卫浴空间墙面、天花及外墙铺装。

Application Tips 应用提示

The base should be smooth and flat. Need to use V-tooth trowel to paste adhesive on the back of product to create V pattern. Do not paste the adhesive with flat pattern on the back of the product. Use slab rubber to hit the product, and pressing with finger is not allowed, since it will cause the product surface uneven. Suggest to do the grouting with same color grout or silicone glue. Or leave 2mm natural gap for "Brick" style installation.

该产品板面平整，基层要求也需相对平整。用锯齿镬刀在产品背面刮浆，刮出锯齿纹路，不可平抹浆。用胶板均匀拍打产品表面，严禁用手指按压。建议留缝铺贴，填同色缝或硅酮胶，勾凹缝。也可留2mm自然缝工字铺贴。800x400mm·按订货量木箱包装，包装费另计。

Nature, Unique, Classics 特点：源于天然 无一重复 片片经典



云洞石 工字组合 575x286mm 勾8mm/025缝 "Brick"style

霞光石 两种规格组合 575x286 286x190mm 勾8mm/043缝



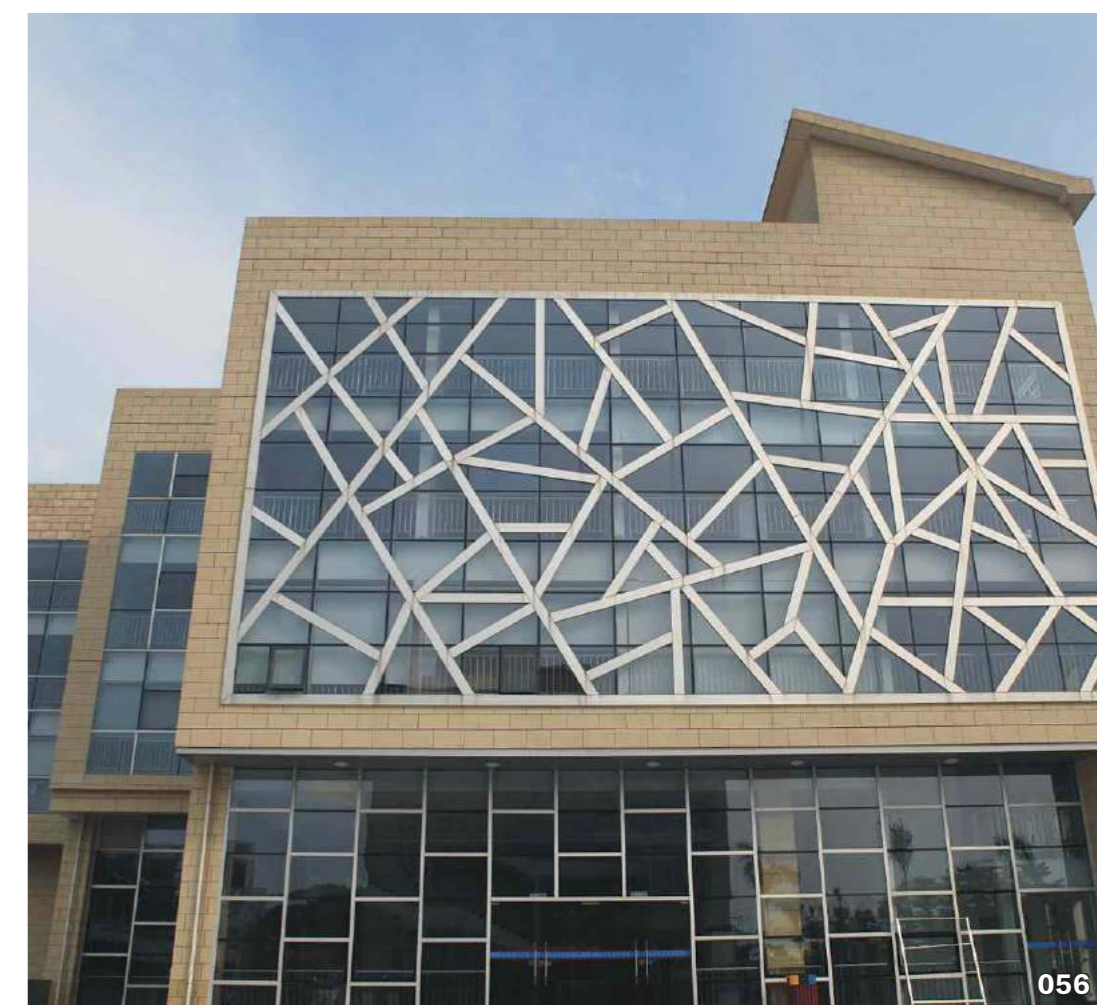
若云石 两种规格组合 1200x600 600x600mm 勾8mm/025缝



052



SANDSTONE CLOUDE 若云石



056



052



221



031

Packing Information 包装信息

Product Size 常规规格 (mm)	1200x300
Box Size 外包装规格 (mm)	1300x690x1040
pc/box 片/件	86
Kg / box 件	400-450
m ² / box 件	30.96
MOQ 最少起订量 (m ²)	185.76

Product Description 产品说明

MCM Crossard Mushroom Stone looks thick and heavy, but it is light, balance, and it can bear the strong impact.

MCM蘑菇石看似厚重，却轻巧灵活。中间空，四周平整，可承受很强冲击力。

Application Tips 应用提示

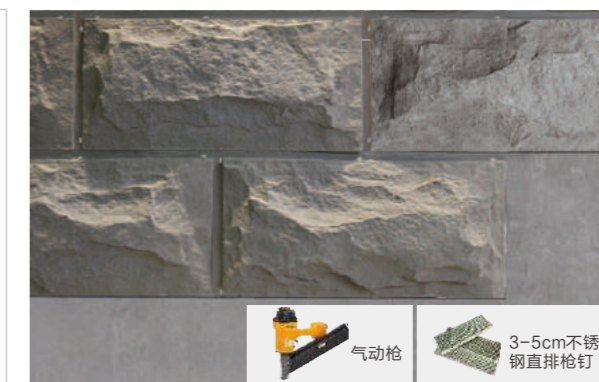
Suggest to do grouting. Paste adhesive around the edge of all over the back side. Each edge at the front should put stainless steel cement nail. To use the same color grout to do the grouting.

宜留缝铺贴，背面四周抹浆，每块四角上打不锈钢水泥钉，采用配套的同色填缝剂拉平缝。

3 STEPS INSTALLATION 应用三步图示



Step 1: Paste adhesive at the edge part on the back of the product.
第1步：背面四周边抹浆。



Step 2: Put stainless steel cement nails at the four corners and middle edges of the product.
第2步：每块四角和中间上下打不锈钢水泥钉。



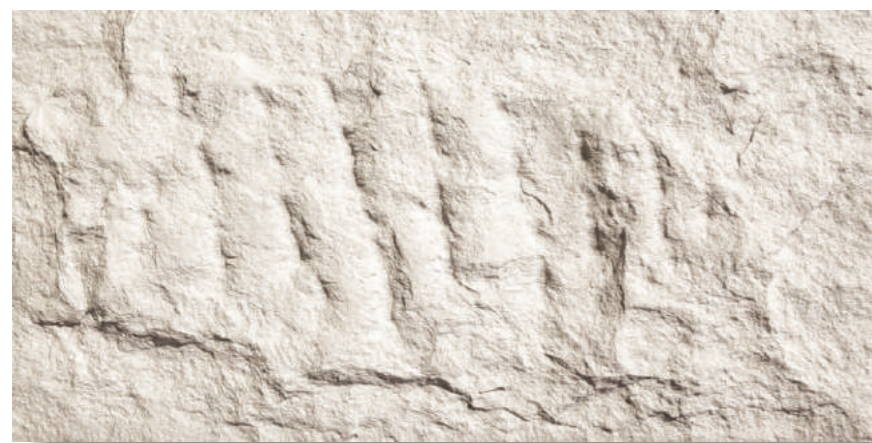
Step 3: To use the same color grout to do the grouting, and to cover the nail holes.
第3步：用配套的同色填缝剂填缝，拉平缝，修补钉眼。



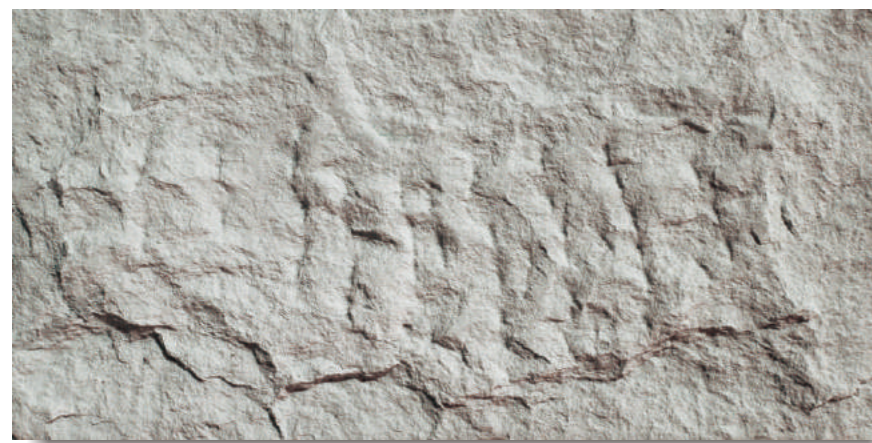
阳角处理图示：用整砖切，45°对碰，同色填缝剂补缺。



221



052



221



043

Packing Information 包装信息

Product Size 常规规格 (mm)	790x380
Box Size 外包装规格 (mm)	900x900x1050
pc/box 片/件	136
Kg / box 件	400-500
m ² / box 件	40.8272
MOQ 最少起订量 (m ²)	204.136

Product Description 产品说明

It applies to the podium, interior wall, exterior wall, and floor as well.
适用于裙楼、内外墙，特殊场地也可以用于地面。

Application Tips 应用提示

Suggest to paste adhesive all over the back side.
应在产品背面整体抹浆粘贴。



221 工字组合 勾10mm/043缝 "Gong" style



031



45° 倒角

阳角处理图示：用整砖切，45° 对碰，同色填缝剂补缺。



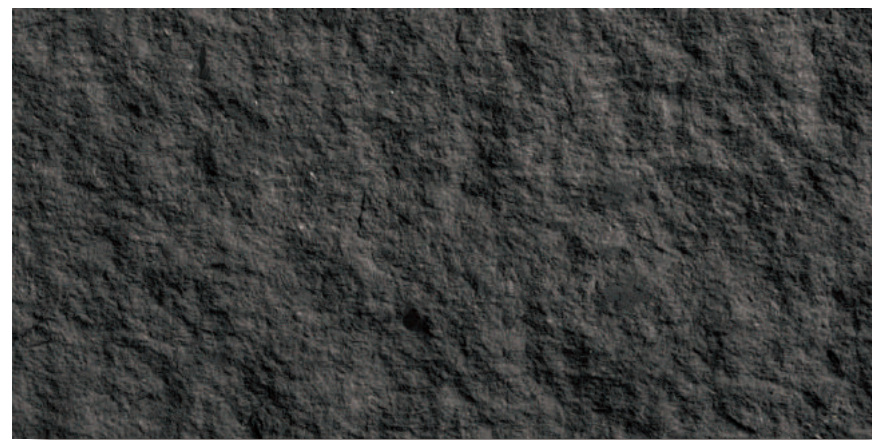
058



052



367



043

Packing Information 包装信息

Product Size 常备规格 (mm)	600x310	1590x580
Box Size 外包装规格 (mm)	620x320x90	1690x670x525
pc/box 片/件	12	50
Kg / box 件	14~17	380~420
m ² / box 件	2.232	46.11
box/pallet 件/托	40	N/M
m ² / pallet 托	89.28	46.11
MOQ 最少起订量 (m ²)	178.56	184.44

Product Description 产品说明

MCM Granite has very rough texture, rubbing and rough and a good replacement of natural granite stone; It applies to the podium and exterior wall.

质感原始粗糙，摩挲不平，是天然毛面花岗岩的绝佳替代者。适用于裙楼、内外墙。

Application Tips 应用提示

Suggest to paste with adhesive all over the back side. Suggest to seam with gap. Use the same color grout to do the grouting.

应在产品背面整体抹浆粘贴。宜留缝铺贴。建议采用配套的同色填缝剂。建议工字铺贴。



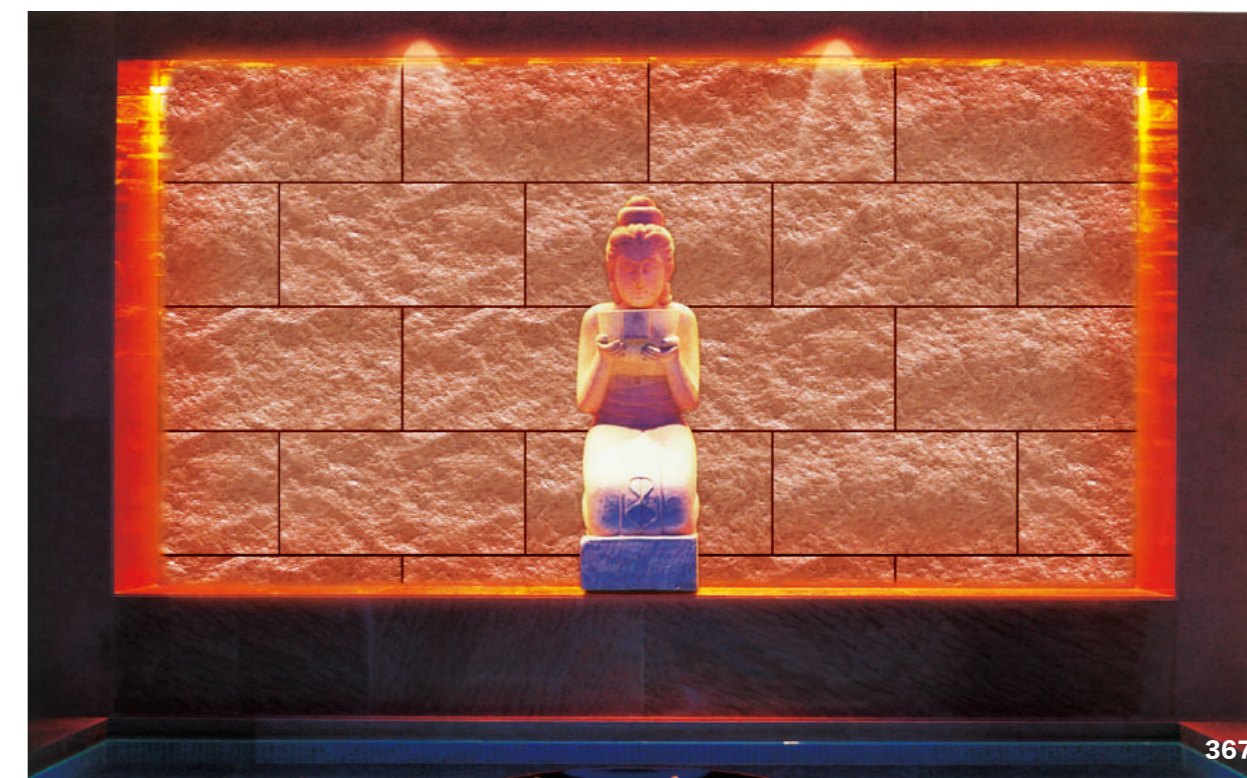
038 三种规格组合 600x310 600x200 600x100mm
勾8mm/043缝



052 1590x600mm 勾10mm/043缝



038



367

MCM CUT STONE
MCM 北美布纹石



052

Packing Information 包装信息

Product Size 常规规格 (mm)	1200x600	600x300
Box Size 外包装规格 (mm)	1230x620x65	620x320x90
pc/box 片/件	16	22
Kg / box 件	58~64	11~15
m ² / box 件	11.52	3.96
box/pallet 件/托	10	40
m ² / pallet 托	115.2	158.4
MOQ 最少起订量 (m ²)	230.4	158.4

Product Description 产品说明

MCM Cut Stone is a kind of perception with elegant and classic. It uses large area for corridors, lobby, living room, commercial spaces, office wall and small area for column and background wall.

布纹是一种观感, 清雅、经典。大面积用于走廊、大堂、客厅、商业/办公空间墙面的铺装和小面积用于柱子、背景墙的铺装。

Application Tips 应用提示

Suggest to past adhesive all over the back side. Suggest leave 1mm natural gap when doing "Brick" style.

应在产品背面整体抹浆粘贴。宜工字留1mm自然缝。



052



052



052

MCM INFINITI STONE
MCM 南岛岁月痕



058



031



043

Packing Information 包装信息

Product Size 常规规格 (mm)	580x300
Box Size 外包装规格 (mm)	620x320x90
pc/box 片/件	10
Kg / box 件	13~18
m ² / box 件	1.74
box/pallet 件/托	40
m ² / pallet 托	69.6
MOQ 最少起订量 (m ²)	208.8



052



052



031

Product Description 产品说明

MCM Infiniti Stone has overall sense of simplicity and beauty. It applies to all kinds of commercials places, public places, entertainment spaces, exterior wall, interior wall, family house and office background wall.

整体感质朴至诚, 简约而美。适用于各种商业环境、公共环境、休闲娱乐场所等外墙和内墙的铺装以及家庭、办公空间背景墙。

Application Tips 应用提示

The construction of MCM Infiniti Stone is the same as natural stone, it need to joint in echelonment or "Brick" style and paste closely. For interior installation, it canbe stick with nail gun plus put adhesive at points. This product is a duplicate of nature stone with a strong sense of concave and it is natural to have holes but it doesn't affect in using.

施工方法与天然文化石相同, 须工字铺装, 密贴。内装可点粘加枪钉固定。因该产品是文化石类, 凹凸感较强, 凹缝或有少许透底, 并不影响使用效果, 属合格品。

阳角处理图示



海棠角



45° 倒角



Packing Information 包装信息

Product Size 常备规格 (mm)	1150x575	575x286
Box Size 外包装规格 (mm)	1175x595x65	610x310x90
pc/box 片/件	16	26
Kg / box 件	55~60	12~16
m ² / box 件	10.58	4.2757
box/pallet 件/托	10	40
m ² / pallet 托	105.8	171.028
MOQ 最少起订量 (m ²)	211.6	171.028

Product Description 产品说明

The Golden Lolite being added with metallic glaze to create a modern, light, rich artistic looks without repeat. It applies to interior wall, floor, club and KTV etc.

金光青石在毛面石材基础上，精心加上一种金属质感的色釉，更加现代，其色泽冷峻，光芒内敛，具有丰富的艺术感染力，每块颜色、纹理都独一无二。适合应用在内装墙面、地面，尤其在酒吧、KTV等个性场所表现不俗。

Application Tips 应用提示

Suggest to do the grouting, or leave natural gap.

宜留缝、勾缝、自然缝铺装。



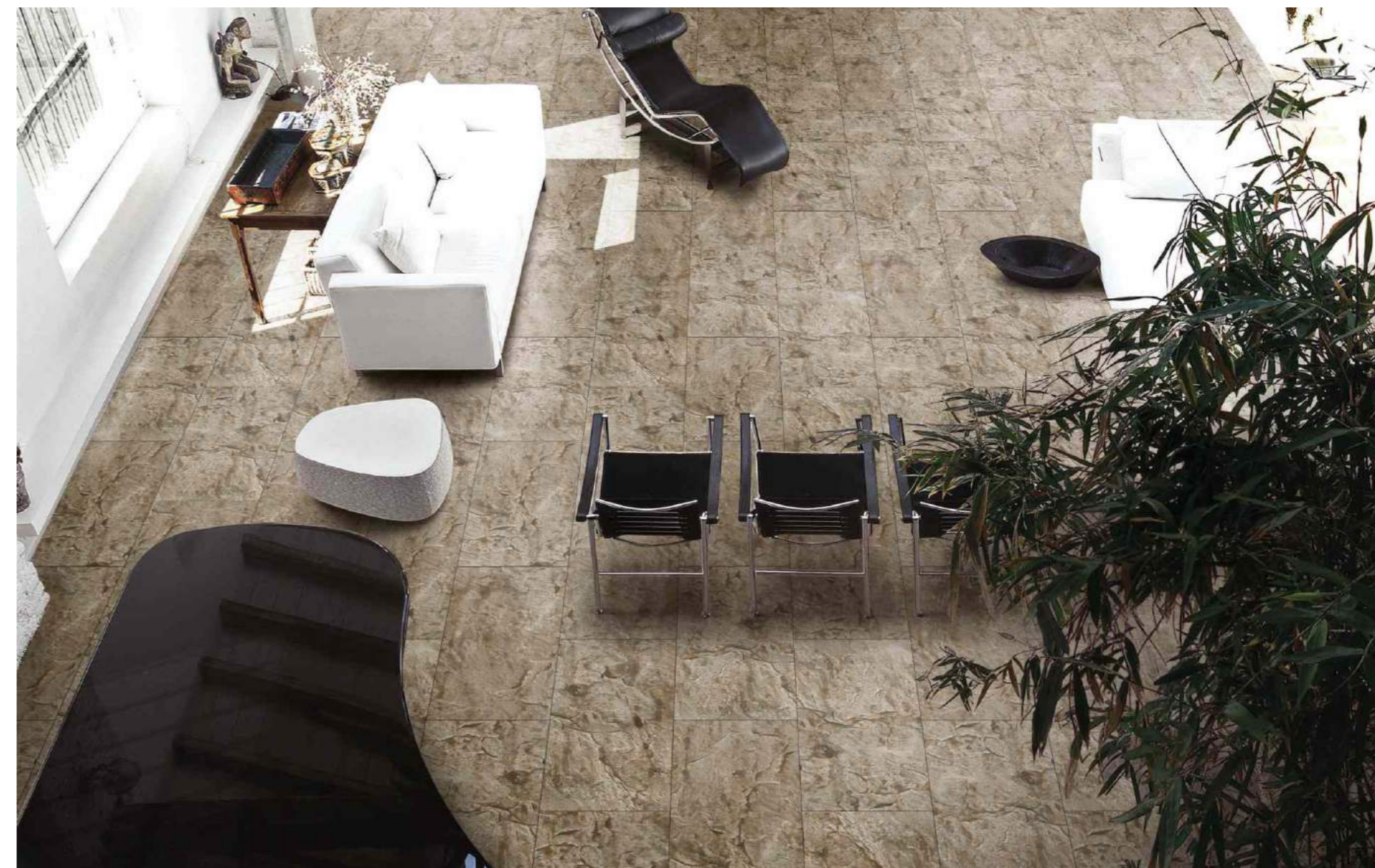
工字组合 575x286mm 勾8mm/043缝



两种规格组合 575x575 575x286mm 勾8mm/043缝



两种规格组合 575x575 286x286mm 勾8mm/043缝





031030



315328



043



043



043

315

Packing Information 包装信息

Product Size 常规规格 (mm)	595x280
Box Size 外包装规格 (mm)	620x320x90
pc/box 片/件	12
Kg / box 件	11 ~ 14
m ² / box 件	1.9992
box/pallet 件/托	40
m ² / pallet 托	79.968
MOQ 最少起订量 (m ²)	239.904

Product Description 产品说明

把毛面石材切成长方形条石，然后拼装成最利于铺装的595x280规格，极大的方便施工。可大面积用于外墙、内墙等铺装。

MCM 35 Piece Stack Stone give a look of stacking different pieces long strip stones together while keeping your installation work easier.

Application Tips 应用提示

应在产品背面整体抹浆粘贴。应用提宜工字铺贴，密缝。

Suggest to paste adhesive all over the back side. Suggest to paste the products in echelonment or "Brick" style.

Unfired Flexi Clay MCM FACING BRICK

MCM劈开砖&窑变砖

MCM Facing Brick has the same unique texture as kiln-fired brick, however, flexible and thin.

砖面肌理与土窑烧制的陶土砖一样，每块纹理都独一无二；薄、柔而不失传统陶土砖的凝重感。

Nature, Unique, Classics 特点: 源于天然 无一重复 片片经典



031043 组合图 勾10mm/043缝



308317 组合图 勾10mm/043缝



030038



308317

Packing Information 包装信息

Product Size 常规规格 (mm)	230x58
Box Size 外包装规格 (mm)	460x260x160
pc/box 片/件	450
Kg / box 件	21~24
m ² / box 件	6.003
box/pallet 件/托	40
m ² / pallet 托	240.12
MOQ 最少起订量 (m ²)	240.12

Product Description 产品说明

MCM G-Fambe Brick surface texture seems like after fire burning, it shows different shades, natural color, and strong artistic appeal. It applies to old building reform, history scenery spaces.

产品面状肌理犹如在土窑中经过大火煨烧, 呈现出深浅不一, 自然多变的颜色, 色彩丰富饱和, 艺术感染力强。尤其适合应用于旧城立面改造、历史文化景观打造等场所。

Application Tips 应用提示

Needs to paste adhesive on the backside of the product.

宜采用配套的粘合剂在产品背面刮浆铺贴。

Nature, Unique, Classics 特点: 源于天然 无一重复 片片经典



308317 组合图 勾10mm/043缝



085089 组合图 勾10mm/043缝



085089 组合图 勾10mm/043缝



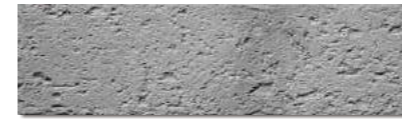
031043 组合图 勾10mm/038缝



031043 组合图 勾10mm/038缝



031043 组合图 勾10mm/038缝



221231 组合图 勾10mm/221缝



221231 组合图 勾10mm/221缝



221231 组合图 勾10mm/221缝



308317



085089

Packing Information 包装信息

Product Size 常规规格 (mm)	222x63
Box Size 外包装规格 (mm)	460x260x160
pc/box 片/件	300
Kg / box 件	15~18
m ² / box 件	4.1958
box/pallet 件/托	40
m ² / pallet 托	167.832
MOQ 最少起订量 (m ²)	335.664

Product Description 产品说明

MCM R-Fambe Brick surface reflects a kind of natural spirit, and a kind of trace after hundreds years of rain. The color of burning to make the building back to the natural look. It usually use in the new building, old building reform, commercial spaces, catering, public spaces, entertainment spaces, and background wall.

面状肌理犹如历经百年风雨侵蚀, 具有独特的艺术感染力。如土窑烧制般的颜色, 让建筑回归本真。常用于新建筑和旧建筑改造及商业、餐饮业、公共环境、休闲娱乐场所形象墙、背景墙的铺装。

Application Tips 应用提示

Needs to paste adhesive on the backside of the product.

宜采用配套的粘合剂在产品背面刮浆铺贴。

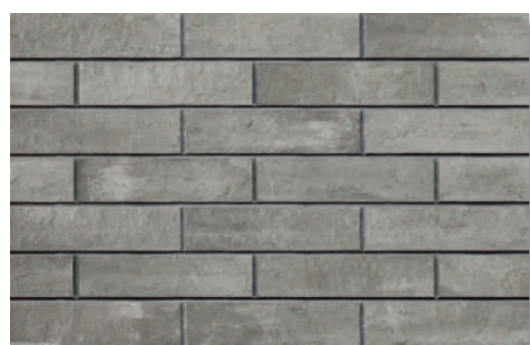
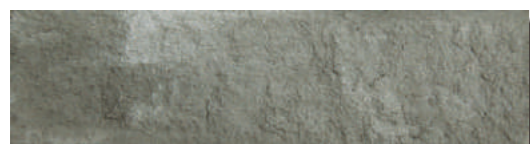
Nature, Unique, Classics 特点: 源于天然 无一重复 片片经典



306315 组合图 勾10mm/043缝



085089 组合图 勾10mm/089缝



221231 组合图 勾10mm/038缝



052

Packing Information 包装信息

Product Size 常规规格 (mm)	225x60
Box Size 外包装规格 (mm)	460x260x160
pc/box 片/件	280
Kg / box 件	14~18
m ² / box 件	3.78
box/pallet 件/托	40
m ² / pallet 托	151.2
MOQ 最少起订量 (m ²)	302.4

Product Description 产品说明

MCM K-Series Facing Brick surface texture of stone is uneven, rugged, and original natural.

劈面石材纹理, 质面嶙峋多变, 凹凸不平, 犹如从山石劈下, 保持着石材的原始生态。

Application Tips 应用提示

Needs to paste adhesive on the backside of the product.

宜采用配套的粘合剂在产品背面刮浆铺贴。

Unfired Flexi Clay

MCM WOOD

MCM 生态木

We make wood from soil, not by hewing down trees.

有纯天然的实木肌理和质感,
却没有砍伐森林。

Nature, Unique, Classics 特点: 源于天然 无一重复 片片经典



JAGGED WOOD EVEREST 檀香木



"Brick" style with 2mm natural gap 组合图 留2mm自然缝



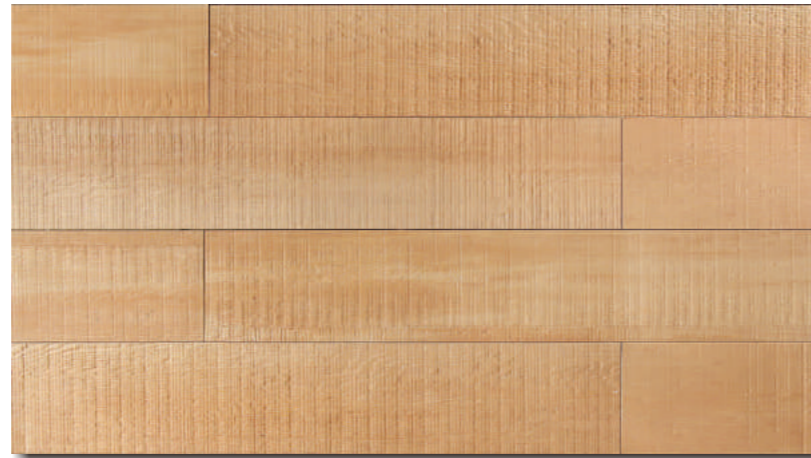
JAGGED WOOD OLYMPUS 铁青木



Grouting with 10mm gap 组合图 勾10mm/043缝



JAGGED WOOD ALPS 檀黄木



"Brick" style with 2mm natural gap 组合图 留2mm自然缝

Product Description 产品说明

MCM Wood is a product with light weight, bendable, water proof and fire proof. It applies to wet zone, such as, bathroom, and floors near swimming pool. It also applies to large area for exterior wall and floor, interior wall and floor as well.

木的锯齿痕迹中还依稀可见树的年轮, 不用抛光, 不用上漆, 抗污自洁, 更加健康、环保、生态、防火, 耐水, 防腐, 富有弹性。能弯, 能钉、能螺。可铺装于湿性大的空间, 如卫浴空间、游泳池边。可大量用于外墙地面, 也可用于内装墙地面。

Application Tips 应用提示

To paste adhesive on the backside of the product. Suggest to leave 1-2mm natural gap with 'Brick' style for installation. If the gap > 6mm, it is suggest to do the grouting.

宜采用配套的粘合剂粘贴, 在产品背上刮浆, 留1-2mm自然缝工字铺贴。大于6mm缝, 须采用配套的填缝剂填缝, 并勾出凹缝。

Packing Information 包装信息

Product Size 常备规格 (mm)	Box Size 外包装规格 (mm)	pc/box 片/件	Kg / box 件	m ² / box 件	box/pallet 件/托	m ² / pallet 托	MOQ 最少起订量 (m ²)
900x180	920x570x80	78	55~60	12.636	10	126.36	252.72



JAGGED WOOD OLYMPUS 铁青木



JAGGED WOOD ANDES 科檀木



JAGGED WOOD EVEREST 檀香木

Nature, Unique, Classics 特点: 源于天然 无一重复 片片经典



ORIGINAL WOOD NILE 铁力木



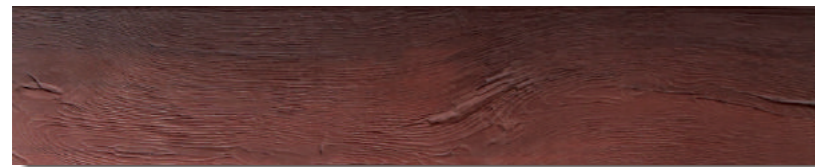
"Brick" style with 2mm natural gap 组合图 留2mm自然缝



ORIGINAL WOOD RHINE 红豆杉



"Brick" style with 2mm natural gap 组合图 留2mm自然缝



ORIGINAL WOOD SUEZ 红檀木



Grouting with 10mm gap 组合图 勾10mm/043缝

Product Description 产品说明

MCM Wood is a product with light weight, bendable, water proof and fire proof. It applies to wet zone, such as, bathroom, and floors near swimming pool. It also applies to large area for exterior and interior application.

面状体现着一种天然木历经数百年而不朽的精神。健康、环保、生态、防火、耐水、防腐，富有弹性，能弯，能钉、能螺。可铺装于湿性大的空间，如卫浴空间、游泳池边。内装原始木可通过染色及抛釉而取得良好表面，但不能用于外装。通体原始木可大量用于外装，也可用于内装。

Application Tips 应用提示

To paste adhesive on the backside of the product. Suggest to leave 1-2mm natural gap with 'Brick' style for installation. If the gap > 6mm, it is suggest to do the grouting.

宜采用配套的粘合剂粘贴，在产品背上刮浆，留1-2mm自然缝工字铺贴。大于6mm缝，须采用配套的填缝剂填缝，并勾出凹缝。

Packing Information 包装信息

Product Size 常规规格 (mm)	Box Size 外包装规格 (mm)	pc/box 片/件	Kg / box 件	m ² / box 件	box/pallet 件/托	m ² / pallet 托	MOQ 最少起订量 (m ²)
900x180	920x570x80	78	55~60	12.636	10	126.36	252.72





052



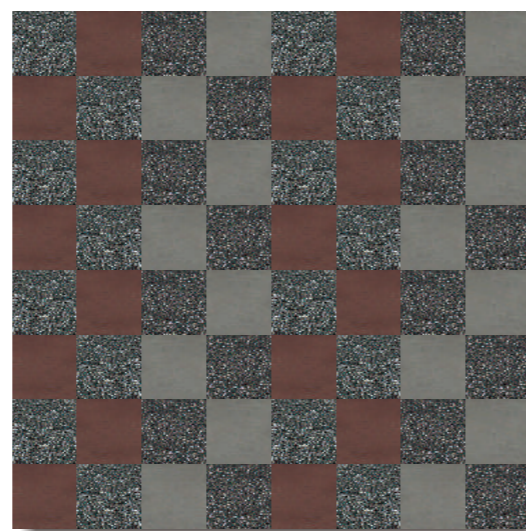
221



043



054象皮/315鳄鱼皮 两种规格组合图 600x600
100x100mm 勾6mm/054缝



031/043/326/315 组合图
600x600mm
勾6mm/043缝

Packing Information 包装信息

Product Size 常备规格 (mm)	1500x600
Box Size 外包装规格 (mm)	1520x620x65
pc/box 片/件	20
Kg / box 件	64~69
m ² / box 件	18
MOQ 最少起订量 (m ²)	180

Product Description 产品说明

MCM Elephantiasi is a green product with features of durable, water proof and fire proof. It applies to family spaces, commercial spaces, public spaces, office, entertainment, bathroom spaces and floor.

性能健康、生态、防火、防潮、防霉、耐水。可广泛应用于家庭空间、商业空间、公共/办公场所、休闲娱乐场所、卫浴空间的墙地面铺装和作为家具面材。

Application Tips 应用提示

Need to paste adhesive at the back of the product. If the joint gap > 6mm, suggest to do the grouting using grout, steel strip or wood strip, or frame it with wood.

宜采用配套的粘合剂粘贴。大于6mm缝，建议采用填缝剂、不锈钢、铜片、实木等填缝或框缝。



054象皮/315鳄鱼皮



370/369

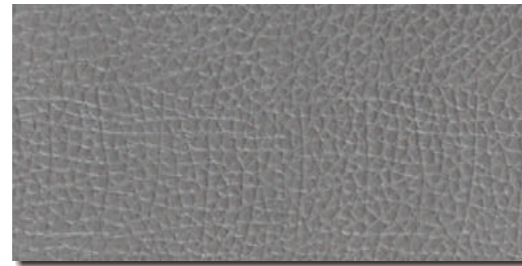


031/043/326/315

MCM COARSE LEATHER
MCM 粗纹牛皮



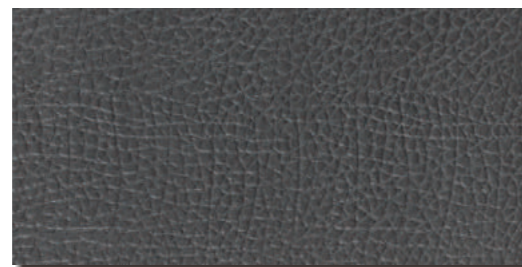
052



031



025



043



221



315



052/025/221 三种规格组合图 1200x600
1200x300 1200x150mm 勾6mm/052缝



052/221/043/315 组合图
600x600mm 勾6mm/052缝

Packing Information 包装信息

Product Size 常备规格 (mm)	1500x600
Box Size 外包装规格 (mm)	1520x620x65
pc/box 片/件	20
Kg / box 件	64 ~ 69
m ² / box 件	18
MOQ 最少起订量 (m ²)	180

Product Description 产品说明

MCM Coarse Leather is a green product with features of durable, water proof and fire proof. It applies to family spaces, commercial spaces, public spaces, office, entertainment, bathroom spaces and floor. It applies to family spaces, commercial spaces, entertainment, bathroom, and floor near swimming pool. It can apply to both exterior and interior.

面纹相对粗而均匀、优雅。性能健康、生态、防火、防潮、防霉、耐水。适用于家庭空间、商业空间、公共场所、休闲娱乐场所、卫浴空间、游泳池边的地面铺装。MCM粗纹牛皮在制造中可添加颜料调配取得任何鲜艳颜色，但不能用于外装。通体MCM粗纹牛皮可大量用于外装，也可以用于内装。

Application Tips 应用提示

Need to paste adhesive at the back of the product. If the joint gap > 6mm, suggest to do the grouting using grout, steel strip or wood strip, or frame it with wood.

宜采用配套的粘合剂粘贴。大于6mm缝，建议采用填缝剂、不锈钢、铜片、实木等填缝或框缝。

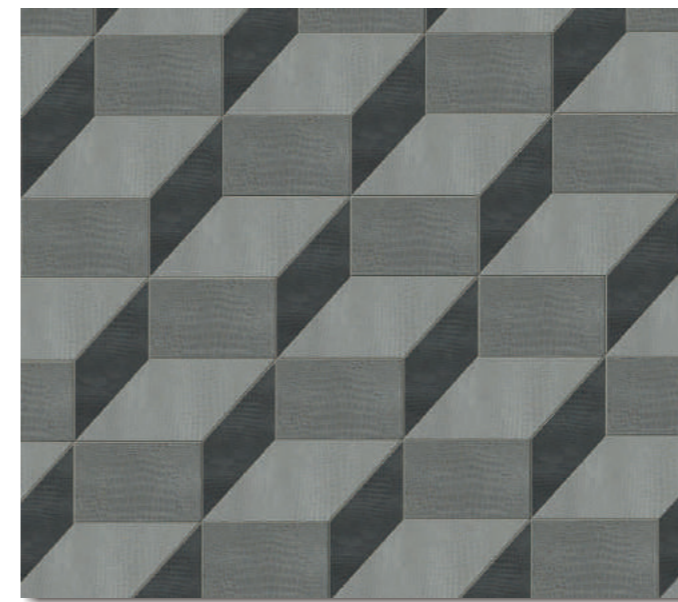


052/025/221

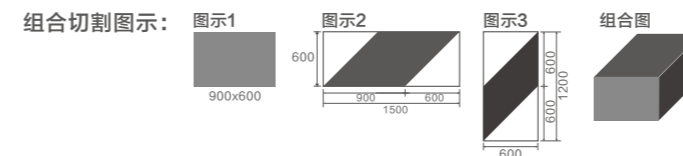
MCM CROCO
MCM 鳄鱼皮



221/315 两种规格组合图 600x600 100x100mm 勾6mm/221缝



030/031/043 三种规格组合图 勾6mm/031缝



Packing Information 包装信息

Product Size 常备规格 (mm)	1500x600
Box Size 外包装规格 (mm)	1520x620x65
pc/box 片/件	20
Kg / box 件	64 ~ 69
m ² / box 件	18
MOQ 最少起订量 (m ²)	180

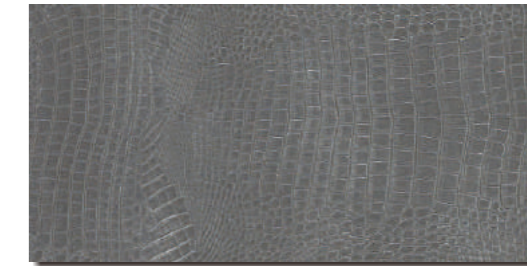
Product Description 产品说明

MCM Croco design is a green product with features of durable, water proof and fire proof. It applies to family spaces, commercial spaces, public spaces, office, entertainment, bathroom spaces and floor. It applies to family spaces, commercial spaces, entertainment, bathroom, and floor near swimming pool. It can apply to furniture surface.

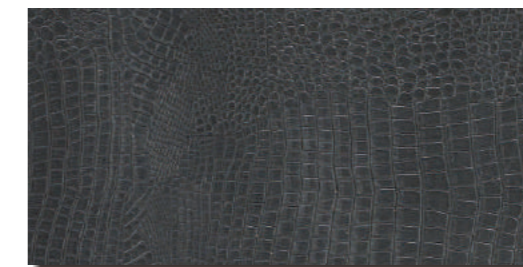
设计灵感来源于世界珍稀动物美洲鳄，质感奢华，性能健康、生态、防火、防潮、防霉、耐水。可广泛应用于家庭空间、商业空间、公共/办公场所、休闲娱乐场所、卫浴空间的墙地面铺装和作为家具面材。



221



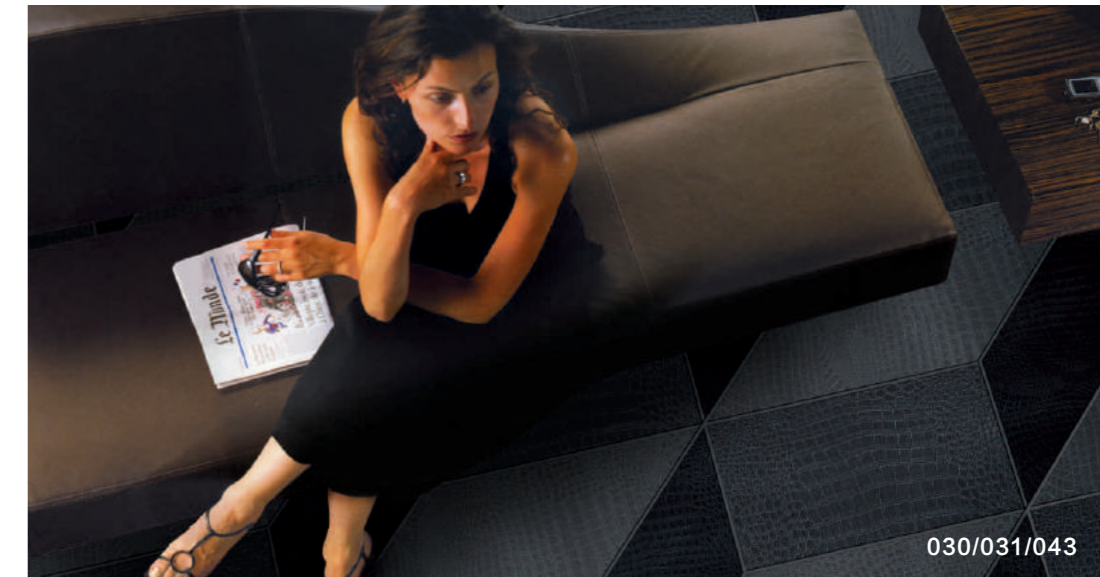
038



043



315



030/031/043

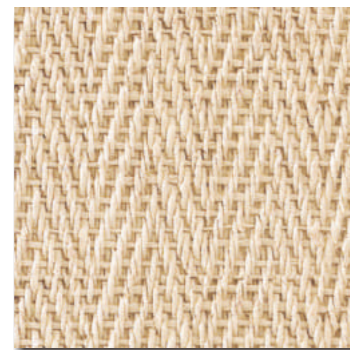
Application Tips 应用提示

Need to paste adhesive at the back of the product. If the joint gap > 6mm, suggest to do the grouting using grout, steel strip or wood strip, or frame it with wood.

宜采用配套的粘合剂粘贴。大于6mm缝，建议采用填缝剂、不锈钢、铜片、实木等填缝或框缝。



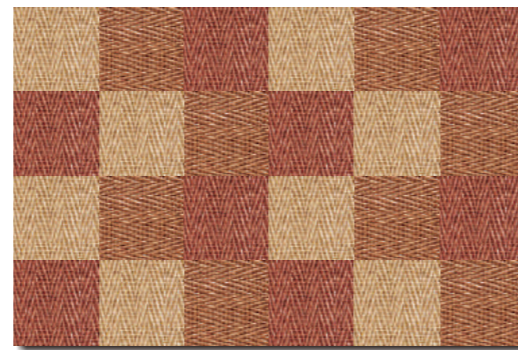
052



054



054 600x600mm 密贴



054/058/360 组合图 600x600mm 密贴



201



056



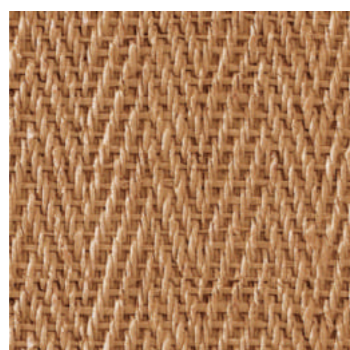
058/360/308/326 组合图 600x600mm 密贴



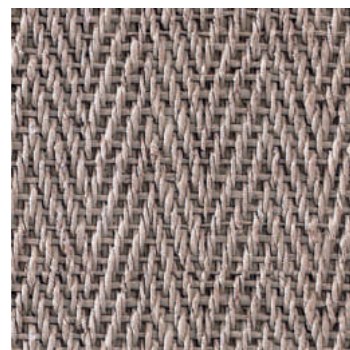
052/025/221 组合图 600x600mm 密贴



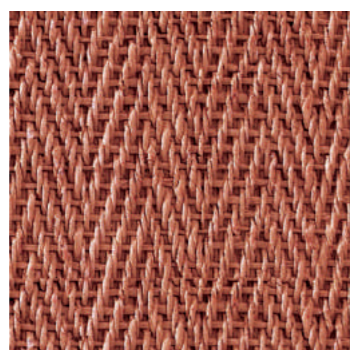
203



087



206



360

Packing Information 包装信息

Product Size 常规规格(mm)	Box Size 外包装规格(mm)	pc/box 片/件	Kg/box 件	m ² /box 件	MOQ 最少起订量(m ²)
1500x600	1520x620x65	10	62~68	9	90

Product Description 产品说明

MCM Weaving is better than natural woven, not easy to fade, it has great texture, with features of water proof, fire proof.

天然编织布耐久不耐水易腐蚀，而MCM编织，拥有与天然编织的杰出质感和纹理，安全防火，不腐蚀不褪色。

Application Tips 应用提示

Need to paste adhesive at the back of the product. If the joint gap > 6mm, suggest to do the grouting using grout, steel strip or wood strip, or frame it with wood.

宜采用配套的粘合剂粘贴。大于6mm缝，建议采用填缝剂、不锈钢、铜片、实木等填缝或框缝。



054/315



058/360/308/326



054/058/360

Important Notice Customer should understand and accept the following: 客户需了解并且接受以下事项：

1. Products Quality on Appearance 产品外观质量

I) PHOMI's manufacturing process has been designed to imitate the random beauty and nature of real stone. As such, stone surfaces may contain small air holes or surface anomalies. These differences add to the overall character of the stone and should not be considered to be a manufacturing defect. Every piece MCM product inherently lack uniformity and is subject to variation in aesthetics, color, finish, thickness, density etc.

福美产品生产工艺旨在重现石材的自然美感与天然质地。因此，石材表面可能存在小气孔及不规则。此类差异属石材特性，不属产品缺陷。福美石材每一片都并非完全一致，而有可能在美学，颜色，表面处理，厚薄，和密度等外观上有差异。

II) It is normal if products contain few Residual mesh fringed which does not affect installation .
产品若含有少量毛边属正常现象，不影响安装。

III) It is normal if product size has small variation on diagonal (less than 2 mm) .
产品若对角线有微小差异（少于2毫米）属正常现象。

IV) It is normal that there is some color variation occur on products within the same production batch or across different production batches. These variations add to the overall character of the stone.
产品在同一批次或不同批次中，有色差出现属于正常现象。这些差异增加了石材的真实效果。

Customer should aware and communicate clearly to its customers/retailers/consumers in advance on the above before soliciting orders.

客户须了解以上内容，并在获取订单前，清晰的向其客户/零售店/消费者预先沟通以上内容。

2. Production Cycle 生产周期

Customer acknowledges that the Products are supplied FOB USD and that there is an 30-45 business days lead time for the manufacture to make available out of the factory warehouse for the shipping of products.

客户知道产品是以FOB的形式供应，并且工厂需要30在45个工作日的时间，在工厂的仓库预备好可发送的货物，以便以FOB的形式供货。

3. Examine Products 验货

Customer should conduct inspection before delivery of products. Customer agrees that PHOMI's products comply customer's requirement once the products shipped out of PHOMI 's factory. However, customer remains right to raise an objection within 15 days after the products arriving destination port.

客户要在货物出厂前进行验货；产品一经出厂，视为客户同意福美的产品符合客户要求. 但是，客户拥有在货物到达目的港15天内提出异议的权利。

4. Products Delivery 发货

Customer has to deliver all the products within 15 days after delivery notification received. Otherwise storage fees will be charged to customer according to the daily 0.5% of total amount. Exceed 30 days without balance paid and delivery from customer, the products will be confiscated by PHOMI without returning on deposits.

客户收到福美提货通知后，需于15天内提清所定货物。如过约定期限，客户未支付余款提取货物，福美将每日按货款总额的0.5%向客户收取仓储费。如过30天还未支付余款提取货物，甲方将没收该批货物并不退定金。

5. Storage Conditions 储存条件

PHOMI's product can absorb smell due to its breathable features. Customer should keep the storage environment odorless, dry and with good air circulation during transportation, storage and reselling on the Products.

因福美产品具有可呼吸性的特点，比较容易吸附异味。为确保福美产品不吸收不良气味，请客户在运输，储藏，以及再销售期间，需要确保货物的摆放环境是无异味，干燥和通风良好的。